

**3/31/26**

**Firm overview**

Federated Hermes, Inc. is a leading \$902.6 billion global investment manager (assets under management as of 12/31/25). Guided by our conviction that responsible investing is the best way to create wealth over the long term, Federated Hermes offers world-class investment management and engagement services. Our products span equity, fixed-income, alternative/private markets, multi-asset and liquidity management strategies and a range of separately managed account strategies, all distributed through a network of institutions and intermediaries worldwide.

**Composite**

Federated Hermes  
MDT Large Cap Value SMA

**Index**

Russell 1000® Value Index

**Key investment team**

Daniel Mahr, CFA  
Damien Zhang, CFA  
Frederick Konopka, CFA  
John Paul Lewicke  
Kelly Patel, CFA

**Philosophy**

We believe excess returns can be achieved using an active, systematic investment approach with an analytical edge, and that return drivers vary across companies. We also believe that a risk-managed portfolio construction process can help limit unintended risks, and that ongoing, innovative research is essential to discovering opportunities that can strengthen the investment process and help ensure our investment strategies remain robust.

**Process**

The MDT Team employs a disciplined, bottom-up, quantitative investment approach designed to be objective and absent from human bias. The investment process centers on three main elements: alpha forecasting, portfolio construction and thorough pre-trade reviews. Underpinning the investment process is rigorous, ongoing research focused on continuous process improvements.

**Distinguishing features**

- 30+ year investment process
- Experienced investment team
- Established, research-intensive approach
- Dynamic process
- Differentiated alpha opportunities
- Highly diversified portfolios
- History of strong, risk-adjusted returns

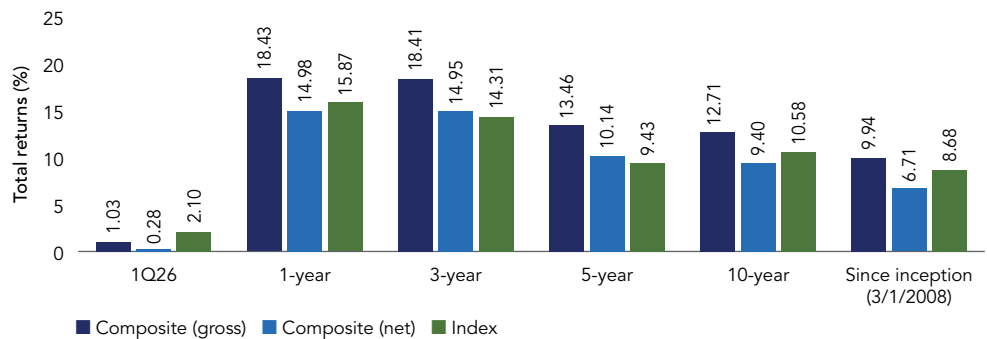
**Alpha forecasting**

- Strategy's investable universe evaluated daily using distinct combinations of fundamental and technical factors
- Quantitative model predicts relative return for each stock
- Stock return forecasts are based on value, quality and growth/sentiment characteristics most relevant to each company
- Model is continuously evaluated for potential enhancements

**Portfolio construction/trading**

- Diversification constraints vs. benchmarks designed to limit exposures to:
  - » Position size
  - » Sectors
  - » Industries
  - » Correlated companies
- Any proposed trades are considered net of trading costs
- Fully transparent with proposed trades reviewed by investment team
- Approximately 100 stocks

**Annualized returns (%)**



Data as of 3/31/26.

Refer to the attached GIPS® report for additional information.

Total returns for periods of less than one year are cumulative.

**Past performance is no guarantee of future results.**

**Not FDIC Insured • May Lose Value • No Bank Guarantee**

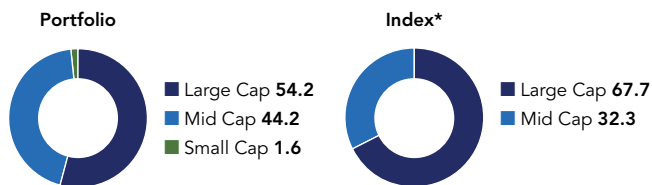
## Portfolio characteristics

	Portfolio	Index*
<b>5-year forward EPS growth (%)</b>	10.1	10.1
<b>P/E forward fiscal year est.</b>	16.0	20.5
<b>Wtd. median market cap** (mil.)</b>	\$67,346	\$123,512
<b>Price/book</b>	3.6x	3.5x
<b>Dividend yield (%)</b>	1.7	1.8

## Sector weightings (%)

	Portfolio	Index
<b>Communication Services</b>	7.4	7.9
<b>Consumer Discretionary</b>	6.8	7.0
<b>Consumer Staples</b>	7.3	7.5
<b>Energy</b>	6.6	7.7
<b>Financials</b>	21.1	20.0
<b>Health Care</b>	12.8	11.7
<b>Industrials</b>	14.2	13.5
<b>Information Technology</b>	11.8	11.7
<b>Materials</b>	4.2	4.4
<b>Real Estate</b>	2.8	3.9
<b>Utilities</b>	5.0	4.7

## Style weightings (%)



## Risk statistics\*\*\*

	Portfolio	Index
<b>Annualized standard deviation (%)</b>	15.62	15.27
<b>Annualized Sharpe ratio</b>	0.67	0.55
<b>Beta</b>	1.00	1.00
<b>Tracking error (%)</b>	3.11	0.00
<b>R-squared</b>	0.96	1.00
<b>Up capture ratio (%)</b>	104.95	100.00
<b>Down capture ratio (%)</b>	95.67	100.00

## Calendar year returns (%)

	Composite (gross)	Composite (net)	Index
<b>2017</b>	15.52	12.14	13.66
<b>2018</b>	-5.67	-8.47	-8.27
<b>2019</b>	21.39	17.85	26.54
<b>2020</b>	5.70	2.57	2.80
<b>2021</b>	28.56	24.83	25.16
<b>2022</b>	-3.47	-6.34	-7.54
<b>2023</b>	12.31	9.02	11.46
<b>2024</b>	22.72	19.15	14.37
<b>2025</b>	20.23	16.72	15.91
<b>2026 (YTD)</b>	1.03	0.28	2.10

Refer to the attached GIPS® report for additional information.

\* Information is derived from a universe that approximates the Russell 1000® Value Index.

\*\* Market cap at which 50% of assets are invested in higher market caps and 50% of assets are invested in lower market caps.

\*\*\* Data from 1/1/16–3/31/26.

Portfolio characteristics and risk statistics do not show the impact of fees or expenses that an investor would have paid.

The sector and style weightings and portfolio characteristics were derived through analysis of all accounts that are “shadowed” on MDT’s APL portfolio accounting system. Since this is a managed portfolio and market conditions can fluctuate suddenly and frequently, the portfolio holdings and investment mix will change.

The portfolio sector weightings have changed over time and may change at any time. Sector weightings are measured as a percentage of the market value of the equity in the portfolio as of the date indicated above. Totals may not add to 100% due to rounding. The Russell 1000® Value Index measures the performance of the large-cap value segment of the US equity universe. It includes those Russell 1000® Index companies with lower price-to-book ratios and lower expected growth values. The Russell 1000® Value Index is unmanaged and not available for direct investment. Investing in equities is speculative and involves substantial risk. Individual client accounts will vary. MDT seeks to optimize every portfolio on a daily basis. However, not all portfolios may trade daily, due to operational issues or liquidity constraints. All charts and tables were created using information from Morningstar, Inc. and MDT’s internal Investment Team. The benchmark analysis presented herein is calculated using software developed by Morningstar, Inc.

**Past performance is no guarantee of future results.**

## Schedule of rates of return and statistics

Composite	Federated Hermes MDT Large Cap Value SMA
Index	Russell 1000 Value Index
Periods ending	3/31/2026

## Returns (%)

	Composite pure gross return <sup>^</sup>	Index	Net composite return (assuming maximum fee)
<b>Q1 26</b>	1.03	2.10	0.28
<b>YTD</b>	1.03	2.10	0.28
<b>1 Year</b>	18.43	15.87	14.98
<b>3 Years (Annlzd)</b>	18.41	14.31	14.95
<b>5 Years (Annlzd)</b>	13.46	9.43	10.14
<b>7 Years (Annlzd)</b>	13.21	10.63	9.89
<b>10 Years (Annlzd)</b>	12.71	10.58	9.40
<b>15 Years (Annlzd)</b>	12.60	10.47	9.29
<b>Mar 08 - Mar 26 (Annlzd)<sup>^^</sup></b>	9.94	8.68	6.71

	Composite pure gross return (%) <sup>^</sup>	Composite net return (%)	Benchmark return (%)	*Composite 3-yr std dev	*Benchmark 3-yr std dev	Number of portfolios	Dispersion <sup>**</sup>	Composite assets (\$mil)	Firm assets (\$bil)
<b>2016</b>	15.99	12.60	17.34	11.78	10.77	<5	N/A	0.1	342.3
<b>2017</b>	15.52	12.14	13.66	11.47	10.20	<5	N/A	0.1	354.7
<b>2018</b>	-5.67	-8.47	-8.27	11.51	10.82	<5	N/A	0.1	377.2
<b>2019</b>	21.39	17.85	26.54	11.82	11.85	<5	N/A	0.1	503.1
<b>2020</b>	5.70	2.57	2.80	19.62	19.62	<5	N/A	0.2	585.7
<b>2021</b>	28.56	24.83	25.16	19.43	19.06	<5	N/A	0.5	634.2
<b>2022</b>	-3.47	-6.34	-7.54	21.66	21.25	<5	N/A	0.5	627.4
<b>2023</b>	12.31	9.02	11.46	17.17	16.51	15	N/A	2.7	720.0
<b>2024</b>	22.72	19.15	14.37	17.48	16.66	26	0.77	4.8	792.2
<b>2025</b>	20.23	16.72	15.91	13.22	12.41	34	0.01	6.9	860.5

<sup>^</sup> Pure gross returns are shown as supplemental and do not reflect the deduction of transaction costs.

<sup>^^</sup> Represents composite inception period. See additional notes to the schedule of rates of return and statistics.

\* Represents the 3-year annualized standard deviation for both the gross composite and the index returns. Statistic is used to measure the volatility of composite returns.

<sup>\*\*</sup> Standard deviation is calculated using gross returns. Standard deviation is not applicable ("N/A") for any period if fewer than five accounts are in the composite for that period. (See footnote 5)

This strategy utilizes a disciplined, quantitative investment process which analyzes a diverse universe of approximately 500 publicly traded domestic equities on a daily basis. The process selects stocks based on fundamental and technical variables, controls risk through diversification constraints, and controls turnover by considering the impact of trading costs. The universe of stocks available to this strategy is the MDT Large Cap Value Universe, which approximates the Russell 1000 Value Index. The Russell 1000 Value Index measures the performance of the large-cap value segment of the U.S. equity universe. Indexes are unmanaged and cannot be invested in directly. Prior to January 2015, this composite consisted of the Federated Hermes MDT Large Cap Value Institutional Composite. Beginning January 2015, wrap fee accounts make up 100% of this composite. This composite was created in December 2014. MDT Advisers, a Federated Hermes advisory company, has managed portfolios in this investment style since March 2008. Performance shown for 2008 is for a partial period starting on March 6, 2008. Federated Hermes claims compliance with the Global Investment Performance Standards ("GIPS<sup>®</sup>") and has prepared and presented this report in compliance with the GIPS<sup>®</sup> standards. Federated Hermes has been independently verified for the period of January 1, 1992, through December 31, 2025. The verification report is available upon request. A firm that claims compliance with the GIPS<sup>®</sup> standards must establish policies and procedures for complying with all the applicable requirements of the GIPS<sup>®</sup> standards. Verification provides assurance on whether the firm's policies and procedures related to composite and pooled fund maintenance, as well as the calculation, presentation, and distribution of performance, have been designed in compliance with the GIPS<sup>®</sup> standards and have been implemented on a firm-wide basis. Verification does not provide assurance on the accuracy of any specific performance report. Accounts eligible for this composite must follow this style, be fully discretionary, and must have wrapped or bundled fees. Performance results are presented both net and gross of total wrap fees and reflect the reinvestment of income. "Pure" gross returns are shown as supplemental and do not reflect the deduction of transaction costs. Net returns reflect the deduction of a maximum fee. A fee equal to the highest anticipated wrap fee that a client could pay (3.00% annually as charged by the program sponsor, inclusive of up to a maximum investment advisory fee of 0.70%) is used. This total wrap fee includes all charges for trading costs, portfolio management, custody, and other administrative fees. Actual fees may vary depending on, among other things, the applicable fee schedule and portfolio size.

### Notes to the schedule of rates of return and statistics

1. Federated Hermes is a global, independent, multi-strategy investment management firm. For GIPS® purposes, Federated Hermes is defined to include the assets of registered investment companies that are advised or sub-advised by the various Federated Hermes advisory companies. Effective September 30, 2020, for GIPS® purposes the name of the firm was officially changed to Federated Hermes. Firm assets on this report exclude assets affiliated with Hermes GPE and the advisory-only, model-based assets that may be included in other reports providing total firm assets.
2. Interest income and dividends are recognized on an accrual basis. Returns include the reinvestment of all income.
3. All market values and performance information are valued in USD unless currency is denoted in composite description.
4. Annual composite dispersion is measured and presented using the asset weighted standard deviation of the gross returns of all of the portfolios included in the composite over the entire year. Prior to January 2023, annual dispersion for the CW Henderson composites was measured using the equal weighted standard deviation of the returns of all the portfolios included in the composite over the entire year. Effective January 2023 this was changed to asset weighted. Prior to March 2020 with regard to Federated Clover Investment Advisors composites, annual dispersion was measured using the equal weighted standard deviation of the returns of all the portfolios included in the composite over the entire year.
5. Composite dispersion does not measure the risk of the product presented; it simply measures the return variance among portfolios managed in a similar fashion. This variance can be affected by variations in cash flow or specific client parameters among the portfolios comprising the composites, as well as by execution of strategy across accounts.
6. See the composite description language for a discussion on appropriate fees currently applied to calculate composite performance. With regard to the institutional composites not managed by the MDT Advisers and Federated Hermes London office teams, for the period July 1, 1992 through September 30, 2009, net of fee performance was calculated monthly by reducing the gross composite return by the highest actual fee of any account in the composite for that month, regardless of investment vehicle. Prior to July 1992, the maximum management fee for third quarter 1992 was used to calculate net of fee performance historically to inception of the composite. For those composites managed by the Federated Hermes London office investment team, net composite results are based off model fees using the stated fee schedule. In addition, further fee information can be obtained from the firm's respective Forms ADV Part 2 Brochure Item 5.
7. Additional information regarding the policies for valuing investments, calculating performance, and preparing GIPS® reports, as well as a complete list and description of the firm's composites and pooled funds is available upon request.
8. Past performance is not indicative of future results.
9. GIPS® is a registered trademark of CFA Institute. CFA Institute does not endorse or promote this organization, nor does it warrant the accuracy or quality of the content contained herein.
10. See disclosures on the Schedule of Rates of Return and Statistics Reports for additional information.

Statistics shown are not indicative of future statistics and are not representative of future portfolio performance.

**Beta:** A measure of the volatility, or systematic risk, of a security or a portfolio in comparison to the market as a whole.

**Downside capture ratio:** A statistical measure of an investment manager's overall performance in down markets.

**EPS growth:** The estimated average annual growth rate of fiscal year earnings per share for a given corporation.

**Price/book value ratio:** A ratio used to compare a stock's market value to its book value. It is calculated by dividing the current closing price of the stock by the latest quarter's book value per share.

**Price-to-earnings ratio (P/E):** A ratio comparing the company's current share price, as compared to its earnings-per-share, for the last twelve months (LTM), or estimated for the next twelve months (NTM), current fiscal year (FY1), or next (forward) fiscal year.

**R-squared:** A statistical measure that represents the percentage of a fund or security's movements that can be explained by movements in a benchmark index.

**Sharpe ratio:** Calculated by dividing a fund's annualized excess return over a risk-free rate by the fund's annualized standard deviation. The higher the Sharpe ratio, the better the fund's historical risk adjusted performance.

**Standard deviation:** The square root of the variance. A measure of dispersion of a set of data from its mean.

**Tracking error:** The standard deviation of the difference between a portfolio's returns and the benchmark or index it was meant to mimic or beat.

**Upside capture ratio:** A statistical measure of an investment manager's overall performance in up markets.

### Risk considerations

Investing in equities is speculative and involves substantial risk.

The quantitative models and analysis used by the strategy may perform differently than expected and negatively affect strategy performance.

When investing in value securities, the market may not necessarily have the same value assessment as the manager, and, therefore, the performance of the securities may decline.